



What is the THERMAL INSULATION solution?

- The weather is getting hotter and your building is affected by a great deal of heat. Your house lies in an area of big difference in temperature between day time and night time. Is your house in the central region of Vietnam? Then it will be affected by the hot west wind from Laos. Why not choose a THERMAL INSULATION solution for your ceiling and wall?
 - Vinh Tuong's THERMAL INSULATION solution helps reduce the unwanted loss or accumulation of heat for your building.

Why is the choice of Vinh Tuong's THERMAL INSULATION solution?

- Make the indoors 8 degree cooler than the outdoors.
- Reduce the monthly domestic household electricity bills.
- Increase the longevity of the house by minimizing the accumulation of heat, leaking and cracking in the surface.
- Use different aesthetic applications for different interior design styles with a wide array of materials.

Beautiful & Cool

EXTERIOR SOLUTION



SOUND INSULATION SOLUTION



FIRE-PROOFING SOLUTION



REINFORCEMENT SOLUTION



MOISTURE RESISTANCE SOLUTION



THERMAL INSULATION SOLUTION

VINH TUONG[®]
 TOTAL CEILING & DRYWALL SOLUTION



Do you know that Vinh Tuong still has many other solutions?

Log on www.vinh-tuong.com or www.tranhadep.com for further information or contact Vinh Tuong specialists by calling the Technical Consultation number for the most suitable solution.

Let's enjoy life through the use of Vinh Tuong's complete solutions.

VINH TUONG[®]
 TOTAL CEILING & DRYWALL SOLUTION

Technical Consultant – Toll Free:
18001218

SOUTH OFFICE: M Floor, IPC Building, 1489 Nguyen Van Linh Street, District 7, HCMC/ DT: (08) 377 61 888 - 377 63 888 / Fax: (08) 377 62 888 - 377 60 824 / Email: vt@vinhtuong.com
 NORTH OFFICE: Floor 14, LILAMA10 Building, To Hieu Road, Ward Trung Van, District South Tu Liem, Hanoi / DT: (04) 3785 6688 / Fax: (04) 3556 6685 / Email: vt-hn@vinhtuong.com
 CENTRE OFFICE: Ansa B4, Thanh Khe 6, Tran Anh Tong, Thanh Khe District, Da Nang City/ DT: (0511) 3766 358 / Fax: (0511) 3766 359 / Email: vt-dn@vinhtuong.com
 SOUTHWEST: Office 71A, 3/2 Road, Hung Loi Ward, Ninh Kieu District, Can Tho City/ DT: (0710) 3781 914 / Fax: (0710) 3781 945 / Email: vt-ct@vinhtuong.com

THERMAL INSULATION 

Cooling off the living space and bringing the perfect beauty for the ceiling

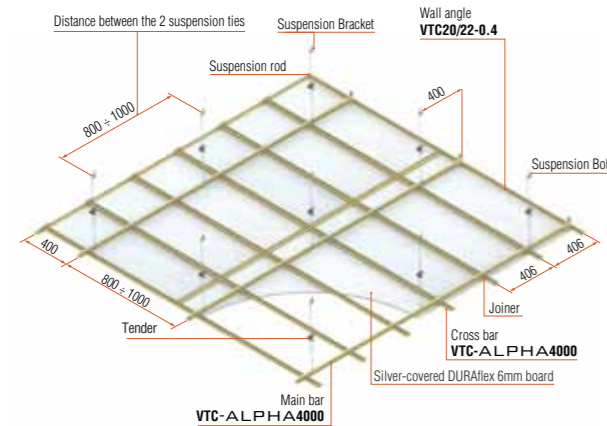
The concealed ceilings with Thermal insulation

Advice from Vinh Tuong specialists

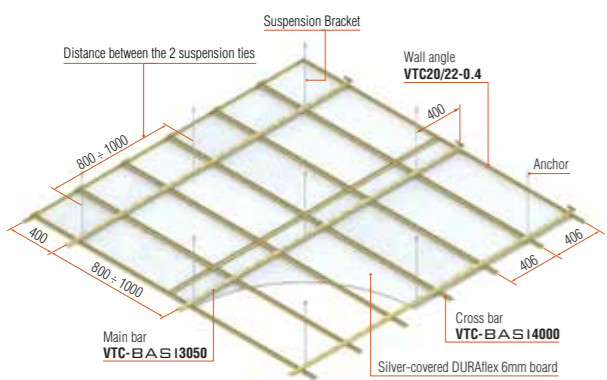
Concealed ceilings come in different styles from classical to modern. For the ultimate effects of THERMAL INSULATION in using concealed ceilings, it is advisable to use the following material supplies as a THERMAL INSULATION solution:

- The concealed ceiling grid **VINH TUONG ALPHA** or **VINH TUONG BASI**
- The standard gypsum boards Gyproc/Duraflex and glasswool with aluminum back; orilver-covered DURAFlex boards
- Accompanying accessories of **VINH TUONG**

The perspective with **VINH TUONG ALPHA**



The perspective with **VINH TUONG BASI**



Illustrated material items



The amount of material supplies needed for one room with square meter "length x width" 6x4m, 6x5m using the concealed ceiling grid, distance between ceiling and roof is 1 meter.
VINH TUONG ALPHA, bar aperture @ 406x800mm
VINH TUONG BASI, bar aperture @ 406x800mm

Name of item	Unit	D6 x R4 m	D6 x R5 m	ALPHA	BASI
1 Main bar VTC-ALPHA4000	Bar	8	10	✓	
2 Cross bar VTC-ALPHA4000	Bar	17	21	✓	
3 Wall angle VTC20/22-0.4	Bar	6	7	✓	
4 Main bar VTC-BASI3050	Bar	9	11	✓	
5 Cross bar VTC-BASI4000	Bar	17	21	✓	
6 Wall angle VTC20/22-0.4	Bar	6	7	✓	
7 Rod d=4mm long 2.7m	Bar	16	19	✓	
8 Suspension Bracket + Suspension Bolt	Cái	30	36	✓	
9 Rod Anchor long 2m	Bar	15	18	✓	
10 Tender	Pcs	30	36	✓	
11 Unicorn Screw 25mm	Pcs	576	720	✓	✓
12 Joint treatment adhesive tape	m	40	50	✓	✓
13 Joineer	Pcs	140	168	✓	
14 Anchor	Pcs	30	36	✓	
15 Washer	Pcs	90	108	✓	
16 Nail	Pcs	100	110	✓	✓
17 Silver-covered DURAFlex 1220x2440x 6mm board	Board	9	11	✓	✓
18 Nut	Pcs	90	108	✓	

VINH TUONG ALPHA
VINH TUONG BASI

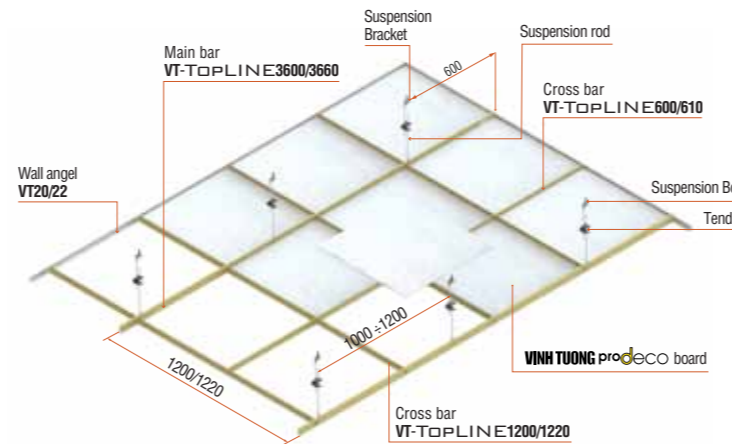
THERMAL INSULATION SOLUTION

The exposed ceilings with Thermal insulation solution

Advice from Vinh Tuong specialists:

Exposed ceilings samples range from classical to simplified, modern, children-oriented...Exposed ceilings are most suitable for attics, steel roofs, tile roofs, ...For the most thermal insulation effect of exposed ceilings, Vinh Tuong offers the thermal insulation solution with following materials:

- The grid **VINH TUONG TOPLINE**.
- Decorative boards **VINH TUONG DECO** and glasswool with aluminium back (*) or high-grade decorative boards **VINH TUONG PRODECO**
- Accompanying **VINH TUONG** accessories



Illustrated material items



The amount of material supplies needed for one room with square meter "length x width" 6x4m, 6x5m using the exposed ceiling grid, distance between ceiling and roof is 1 meter. **VINH TUONG TOPLINE**

Name of item	Unit	D6 x R4 m	D6 x R5 m
1 Main bar VT-TOPLINE3600/3660	Bar	7	9
2 Cross bar VT-TOPLINE1200/1220	Bar	27	32
3 Cross bar VT-TOPLINE600/610	Bar	29	39
4 Wall angle VT20/22	Bar	6	7
5 Tender	Pcs	20	25
6 Rod d=4mm long 2.7m	Bar	11	13
7 Suspension Bracket + Suspension Bolt	Bar	20	25
8 Nail	Bar	100	110
9 Tấm VINH TUONG PRODECO kích thước 605x605mm hoặc 595x595mm	Board	66	84

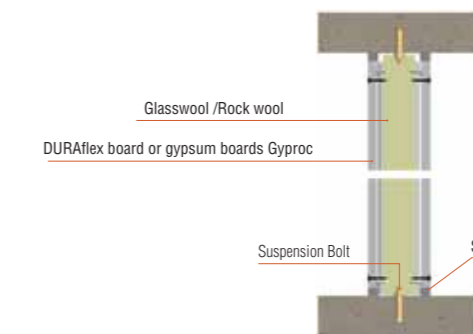
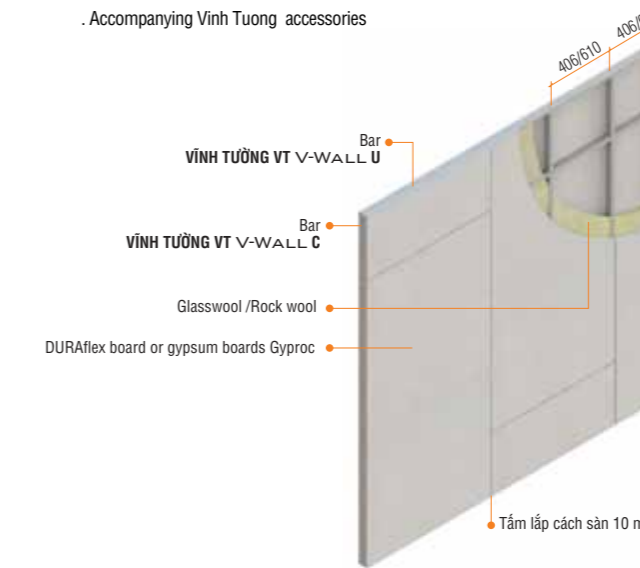
VINH TUONG TOPLINE

The walls with THERMAL INSULATION solution

Advice from Vinh Tuong consultants:

The walls with THERMAL INSULATION solution is targeted at the parts of the house directly affected by sunshine and the areas needing stable temperature. For the effective THERMAL INSULATION of wall, it is recommended to use the following material supplies:

- The grid **VINH TUONG E-WALL**
- DURAFlex board of 8mm or more in thickness, or Gyproc board of 12.7mm or more in thickness
- Accompanying Vinh Tuong accessories



For the house facing the west, the grid **VINH TUONG OMEGA** and glasswool or rockwool with 24kg/m3 can be used for THERMAL INSULATION. Technical consult - Toll Free 18001218 for details

Illustrated material items



The amount of material supplies needed for the wall with square meter "height x width" 3x5m using **VINH TUONG V-WALL** @610 x 1200 mm

Name of item	Unit	C3 x D5 m
1 Vertical bar VT V-WALL 3m long	Bar	10
2 Horizontal bar VT V-WALL 2.7m long	Bar	8
3 Unicorn screw 25mm	Pcs	450
4 Suspension Bolt	Pcs	17
5 Glasswool/Rock wool	m ²	15
6 Nail	Pcs	150
7 DURAFlex board / gypsum boards Gyproc 1220x2440mm	Board	11

VINH TUONG V-WALL